

Listing #1



L14 and L1.9 County Hwy 10, Meredith, NY 13757	
List Price	\$45,000 on 04/26/2025
Status	Active for Sale
Shared in MLS	Yes
Listing ID	11484340
Property Type	Vacant Land
County	Delaware
Township	Meredith and Davenport
School	CHARLOTTE VALLEY CENTRAL SCHOOL DISTRICT
Total Tax	\$629
Tax ID	35.00-2-14.00, 35.-1-1.9
FEMA Flood Map	fema.gov/portal

Beautiful Stream Side Wooded Building Lot - Discover this rare opportunity to own a piece of history with this beautiful stream side wooded ±4.19 surveyed acres nestled just below East Meredith along the Kortright Creek. Formerly part of the New York Central Railroad, this property offers a distinctive blend of heritage, privacy and natural beauty perfect for those seeking a one-of-a-kind homesite. Ideal for a cabin, tiny house or yurt, glamping, outdoor enthusiasts, or anyone inspired by the charm and legacy of historic rail corridors. Enjoy the serene sounds of the stream as you relax in nature's beauty. Just a short drive to all the amenities of Oneonta and only 3.5 hours from NYC. Charlotte Valley Schools. Contact us today to schedule a viewing!

Land Details

- 2 Lots
- 4.19 Acres
- 1670 Frontage

Exterior Features

- Survey
- Creek View
- Scenic View
- Trees
- Wooded View
- Creek Waterfront
- Water View
- Private View
- Water Frontage: 598

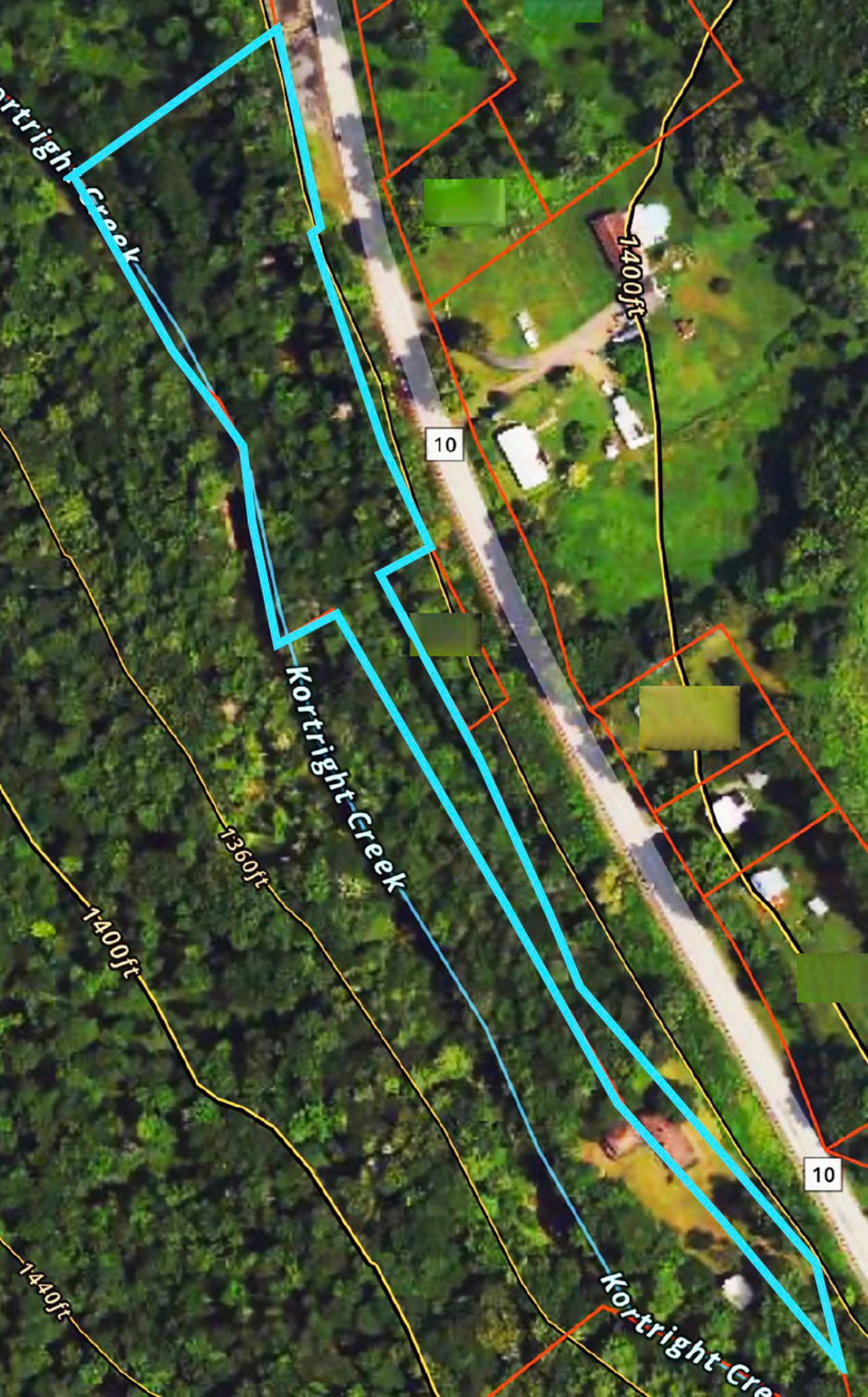
Taxes and Fees

- Tax Year 2025

Presented By

Patricia Bensen-Ashley, ASHLEY CONNOR REALTY 607-547-4045 info@ashleyconnorrealty.com

Listing data is deemed reliable but is NOT guaranteed accurate.



Kortright Creek

1400ft

10

Kortright Creek

1360ft

1400ft

1440ft

Kortright Creek

10